



forever LP
product catalog





Creating with Confidence: The Forever LP Foot and the Road to Recovery

levitate forever LP

Vladislav Blazhchuk is a 30-year-old artist and former soldier from Ukraine. He lost his leg after stepping on a landmine — a life-changing injury that could have ended his creative journey.

But Vladislav, who has been a passionate ceramicist since 2012, found that returning to his craft became a vital part of his recovery, helping him regain focus and purpose.

Today, with the Levitate Forever LP — our low-profile prosthetic foot — Vladislav is back in the studio: lifting heavy molds, teaching classes, and creating with confidence. “The profession of a ceramist is not just sitting at a potter’s wheel. It is constant movement. One mold weighs 28 kilos.

Thanks to this foot, I can do my job without any problems, just like before my injury,” he says.

The flexibility and stability provided by the Forever LP make it possible for him to perform his work with precision and ease.

But recovery didn’t stop in the studio. Vladislav also returned to the gym, rebuilding both his physical strength and mental resilience through movement. He didn’t let any limitations hold him back. “When I’m working with clay or training at the gym,” he says, “I don’t think about what I’ve lost. I think about everything I’ve rebuilt.”



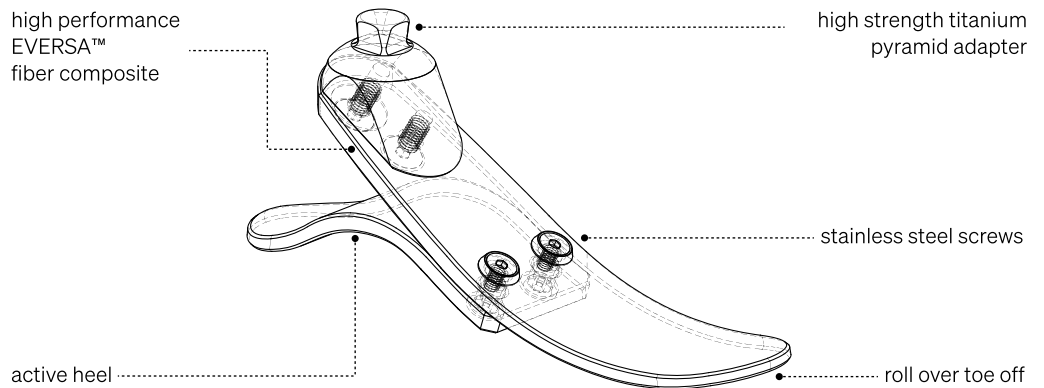
Introducing the Forever LP: A low-profile prosthetic foot engineered for balance and comfort

overview

The Levitate **Forever LP** is ideal for users with limited clearance who prioritize comfort, stability, and reliability without sacrificing style or performance. Constructed from our unique EVERSA™ fiber composite, it offers smooth energy return, impact absorption, and all-terrain adaptability for walking, everyday movement, and even light sports.

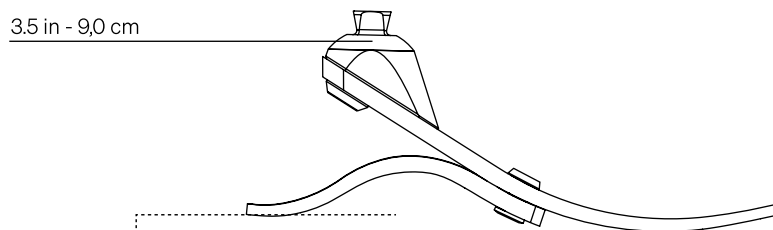
- **Smooth Rollover Mechanics:** Made of our unique EVERSA™ fiber composite, the curved fiberglass spring and active heel ensure natural, fluid transitions for a dynamic walking experience.
- **Active heel and flexible toe:** Provides exceptional energy return and mobility - rarely seen in a low profile design.
- **Elegant Design:** Discreet and stylish profile fits seamlessly with formal or casual clothing.
- **Traction Footshell:** Compatible with the Levitate Traction Footshell.

build structure



build height

3.5 in - 9,0 cm



Heel Height 0.4 in / 1 cm

user & product info

Max body weight	Weight	Sizes
125 kg	380* g	23 - 29 cm

*Specifications refer to Forever LP size 27 weight range 65-80 kg without footshell

footshells

Traction Footshell



Human Footshell - Beige - Brown - Black



Category selection - Applies to Forever LP

size & category chart

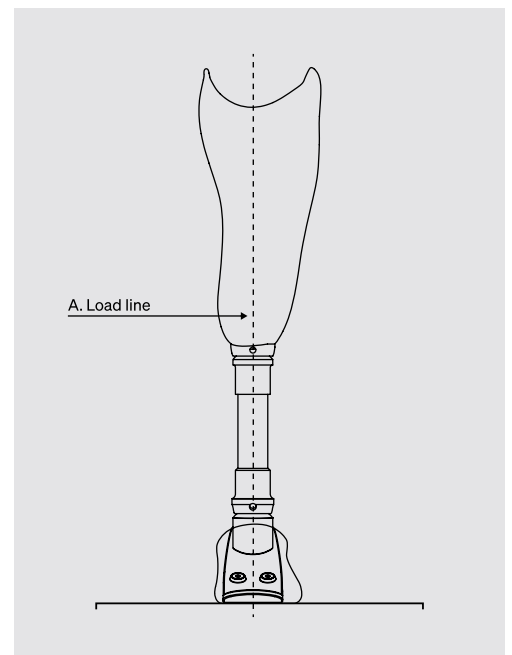
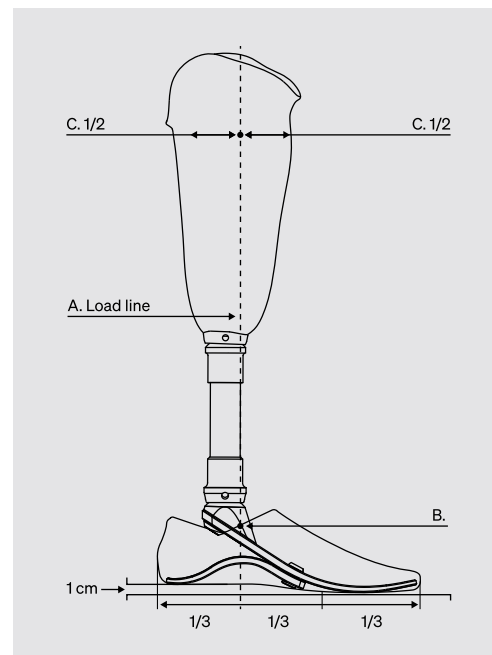
Body Weight		Sizes		
Weight in kg	Weight in lbs	23 - 24	25 - 26	27 - 29
35 - 50	77 - 110	Category 1	Category 1	N/A
50 - 65	110 - 143	Category 1.5	Category 1.5	Category 1.5
65 - 80	143 - 176	Category 2	Category 2	Category 2
80 - 95	176 - 210	Category 2.5	Category 2.5	Category 2.5
95 - 110	210 - 242	N/A	Category 3	Category 3
110 - 125	242 - 275	N/A	Category 3.5	Category 3.5

Depending on the user's activity level, you can go one category higher or lower.

bench alignment

Sagittal plane alignment

Frontal plane alignment



attributes & guidelines

Assemble the prosthetic leg to the socket with the necessary adapters to match the required build height.

Sagittal alignment:

- Align the prosthetic such that the load line (A) passes through the inner third of the foot cover (B) and the midpoint of the socket (C) at the patellar tendon level for TT/BKA or the ischial tuberosity level for TF/AKA.
- Consider socket flexion/extension.
- Consider shoe heel height.

Frontal alignment:

- Consider socket abduction/adduction.

* When using a prosthetic knee, align it following the manufacturer instructions.

Perform a static and dynamic alignment in collaboration with the patient and adjust the prosthetic accordingly to ensure a smooth rollover and a natural gait cycle.



Forever LP

product images



technology

EVERSA™ is Levitate's custom-developed fiber composite technology. A material platform engineered to deliver stability, high but controlled energy response, quiet comfort, and long-term durability—with composure on real-world terrain.

key features



Stability

Designed for smooth, secure ground contact from first touch through full stance. Multi-axial guidance helps maintain control and balance on uneven surfaces, turns, and weight shifts.



Waterproof

Designed for use in wet environments, including everyday water exposure and submersion. It maintains reliable performance in moisture, humidity, and salt water.



Comfort

EVERSA is engineered to reduce harshness at impact through immediate, progressive compliance at contact. A controlled load path helps deliver smooth force transfer and a stable, consistent feel throughout the day.



Durability

EVERSA is engineered to flex under repeated compression with a high safety margin for daily loading. Durability has been validated to 2 million load cycles under relevant ISO testing for long-term performance.



All Terrain

Built to stay controlled and predictable across varied surfaces, including gravel, curbs, cobblestones, and uneven ground. Its gradual deformation helps keep more of the sole engaged for confident movement across changing terrain.



Energy Return

Designed for strong energy storage with a controlled, natural release that makes each step feel smooth rather than abrupt. The result is clean rollover and a consistent step-to-step response that supports intuitive movement.



product images

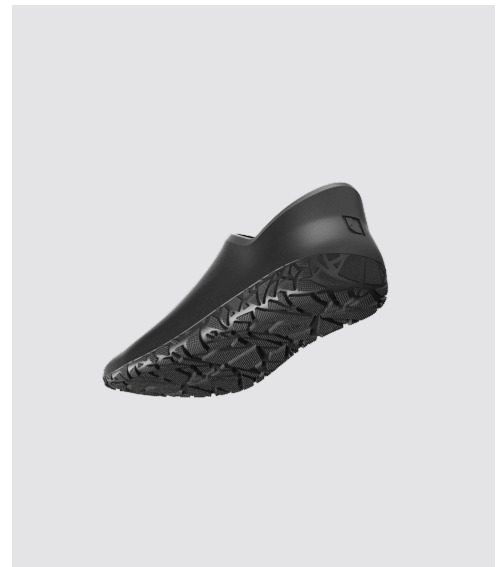


Traction footshell

overview

Engineered for performance and everyday reliability, the Traction footshell is the latest innovation for the Forever LP. Featuring a streamlined, technical design, it offers enhanced grip, long-lasting durability, and waterproof protection—delivering dependable function in a wide range of daily environments.

product images



key features

- **Exceptional Grip:** Designed to be worn inside a shoe, Traction provides secure grip and responsive support during high-activity use. Not to be used as a shoe.
- **Technical Aesthetic:** Made in a bold black finish and minimal design, Traction breaks away from the traditional look of footshells. Not to be used as a shoe.
- **Waterproof Design:** Built for wet environments, Traction features a fully waterproof design that maintains comfort and performance in and around water. Integrated drain holes let water flow through easily—ideal for barefoot use at home, by the pool, on the terrace, or at the beach.

Levitare  Freedom to Play



L5981